



## RELIABLE, EFFICIENT PARTICLE REDUCTION FOR DEMANDING APPLICATIONS

The Schold HSM Horizontal Media Mill is designed for efficient grinding and dispersion across a broad range of materials. It can be used as a stand-alone unit, integrated with a pre-mix or pre-dispersion process, or installed in series with varying media sizes for multi-pass and sub-micron production.

The HSM handles low- to high-viscosity products, thixotropic materials, and moisture- or air-sensitive formulations. The redesigned milling chamber provides consistent particle reduction while allowing quick, straightforward cleanout between batches. The system is suitable for paints, coatings, inks, dyes, chemicals, adhesives, foods, and other process materials.

*Pictured: HSM 20 with Stainless Contact Parts*

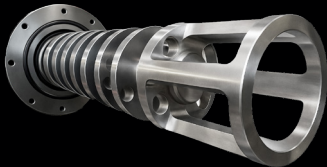
# BETTER MILLING



# FEATURES/CAPABILITIES



Milling Discs  
(Custom for Your Application)



Overcup Design  
(Interior View of Chamber)

- ✓ Consistent, Uniform Particle Reduction
- ✓ Capable of Milling Wide Viscosity Ranges
- ✓ Supports Single-Pass or Multi-Pass Configurations
- ✓ Stable Media Circulation for Reliable Operation
- ✓ Faster Cleaning and Changeover Between Batches

**DISC CONFIGURATION** | Multiple disc geometries and material options—including hardened steel, composite, and polymer alloys—allow tuning of shear input, wear resistance, and energy distribution for different formulations.

**OVERCUP ASSEMBLY** | Application-specific overcup design maintains proper media circulation and consistent clearance from the discharge screen, reducing face-loading and media packing.

**PRECISION-MACHINED MILLING CHAMBER** | The chamber is engineered for uniform flow dynamics and minimal dead zones, supporting stable particle-size reduction in both single and multi-pass operations.

**UTILITY PANEL** | Centralized connections for compressed air, chilled water, and thermal systems simplify installation and ensure reliable process control.

**THERMAL CONTROL ZONES** | Integrated heating and cooling jackets are available with single, dual, or triple temperature zones and flow-rate monitoring for accurate thermal regulation.

**CLEAN-IN-PLACE ACCESS** | The housing rotates into a cleaning position without lifting. Optional cleaning carts and media separation screens reduce turnaround time between batches.



Ceramic Grinding Media  
(Various Materials and Sizes  
Available to Suit Your Application)

# A SOLUTION FOR EVERY NEED

MODEL	HSM 10	HSM 20	HSM 30	HSM 50	HSM 100	HSM 200
CHAMBER	10 L [ 2.6 GAL ]	20 L [ 5.3 GAL ]	30 L [ 7.9 GAL ]	50 L [ 13.2 GAL ]	100 L [ 26.4 GAL ]	200 L [ 52.8 GAL ]
MINIMUM BATCH*	75 L [ 20 GAL ]	75 L [ 20 GAL ]	189 L [ 50 GAL ]	379 L [ 100 GAL ]	757 L [ 200 GAL ]	1.3 KL [ 350 GAL ]
STANDARD BATCH*	189-757 L [ 50-200 GAL ]	189 L - 1.1 KL [ 50-300 GAL ]	379 L - 3 KL [ 100-800 GAL ]	757 L - 7.6 KL [ 200-2,000 GAL ]	1.9-7.6 KL [ 500-2,000 GAL ]	3.8-18.9 KL [ 1,000-5,000 GAL ]
POWER	10-20 HP [ 7.5-15 KW ]	20-50 HP [ 15-37 KW ]	30-60 HP [ 22-45 KW ]	50-75 HP [ 37-56 KW ]	100-150 HP [ 74-112 KW ]	200-250 HP [ 149-186 KW ]

\* Each model can produce smaller or larger volumes. The chart above is a starting reference. Contact us about your application.

# WHY CHOOSE SCHOLD

For more than 75 years, Schold has delivered client-focused solutions built around quality, innovation and trust. We offer both standardized equipment and fully customized systems designed to meet your exact application needs.

From installation through ongoing support, our team is committed to providing exceptional service. With Schold, you're getting more than machinery—you're getting a long-term partner dedicated to your success.

